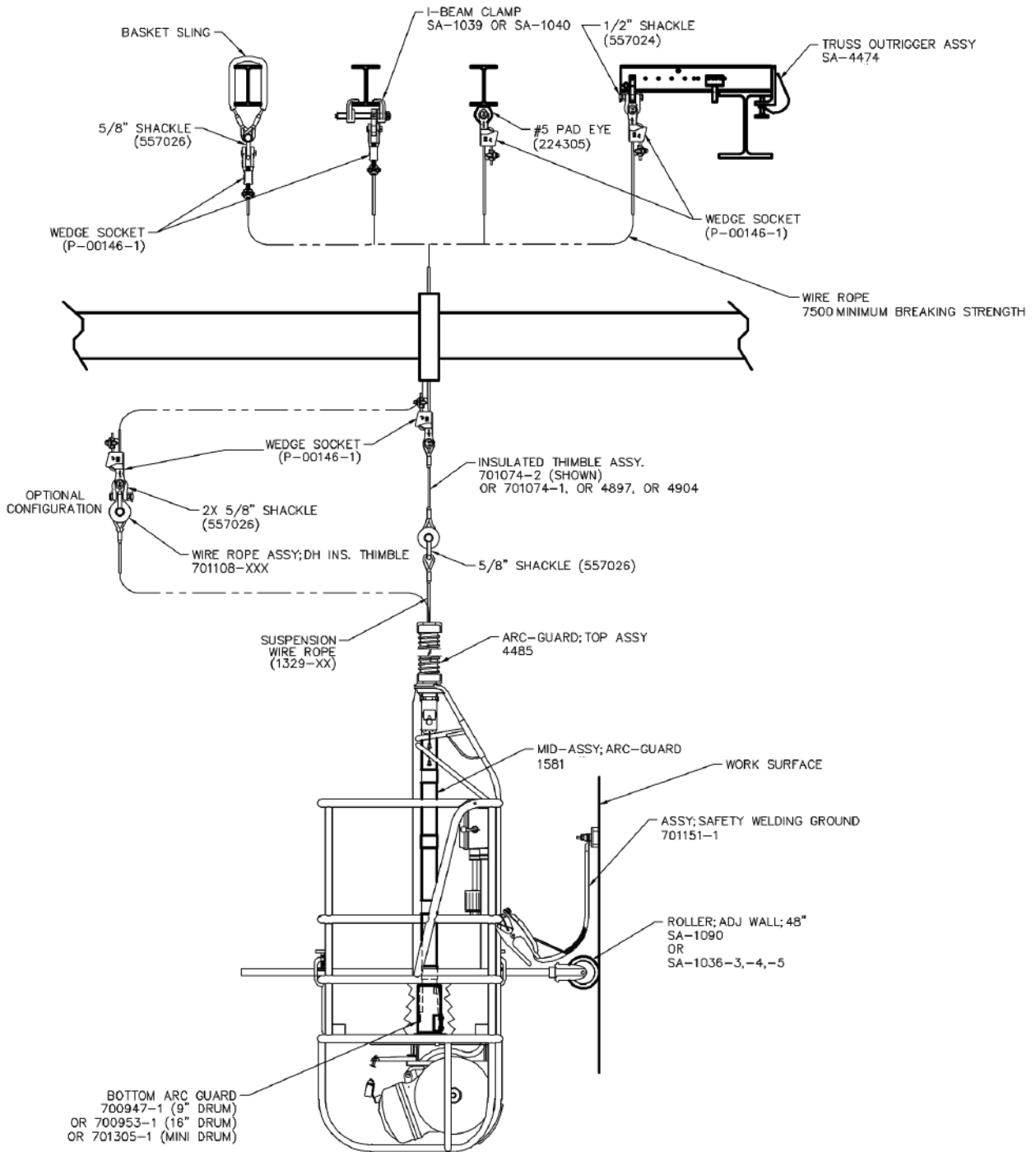


# Welding Installation Details

## Drum Hoist

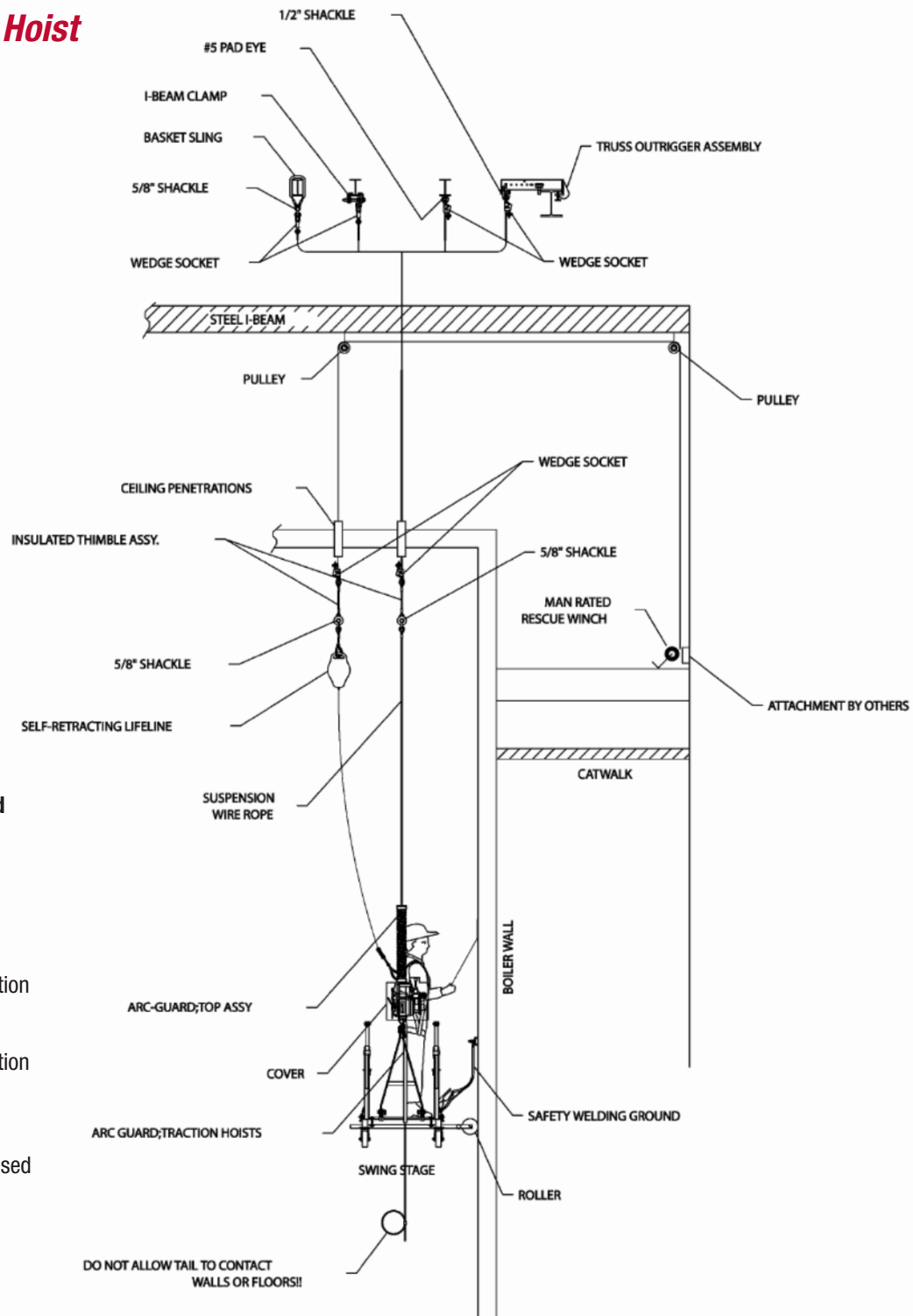


INDUSTRIAL PRODUCT OFFERINGS

Installations to make suspended scaffold comply with OSHA Standard 29 CFR 1926.451 (f) (17).

# Welding Installation Details

## Traction Hoist



### Traction Hoist Arc Guard Components:

**Above the hoist:**  
4485 Arc Guard Top Assy

**Below the Hoist:**  
701301-2 Arc Guard Traction Hoist (SC1000/1500 and Zmac/1000®)  
701301-1 Arc Guard Traction Hoist (SC30/40/99115/99135)

**Alternate:** 1581 can be used below the hoist with modification

More information online at  
[www.spiderstaging.com](http://www.spiderstaging.com)

For more information, call: 1-877-774-3370