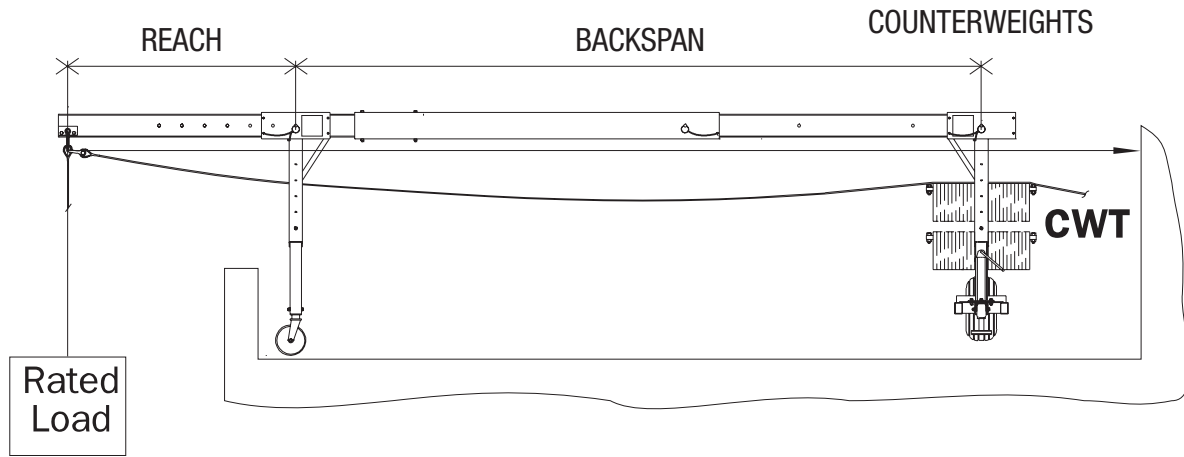


Counterweight Formula



Note: All rigging devices must be securely tied back.

$$\text{Counterweights} = \frac{(4) \times (\text{Rated hoist capacity}) \times (\text{Reach})}{(\text{Back span})}$$

Labels on all Spider devices requiring counterweights provide actual number of 50 lb. (22.7 kg) weights needed or total counterweight required for each reach.
No guesses. No math!

Consult your Spider professional for custom-engineered rigging solutions

More information online at www.spiderstaging.com

For more information, call: 1-877-774-3370