

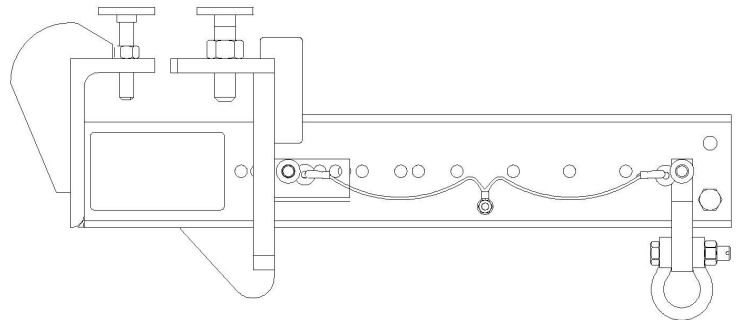
# New Product Alert – Rigging Device

## 702554-1 Bottom Flange Truss Outrigger



### New Truss Outrigger expands ability to mount to bottom flange of beams when unable to rig from the top flange.

- Heavy duty steel construction with stainless steel hardware
- Use only on beams with flange width of 6" or larger. Beam must support 1000 lb vertical load and up to 19,750 ft-lbs of torque with safety factor of 4.
- No tools required for installation
- Thorough labeling ensures worry-free installation
- Components can retrofit to SA-4474 Top Flange Truss Outriggers
- Built by Spider in the USA



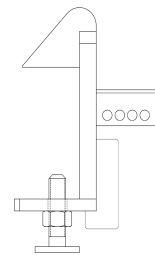
**Load Rating: 1000 lbs**

**Weight: 38 lbs**

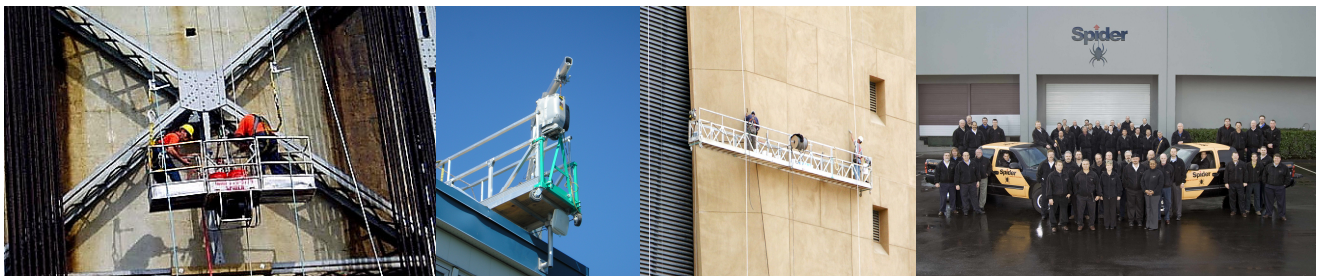
**Min Flange: 6 in**

**Outreach: 3 in minimum or 15.2 in maximum at 6 in flange size**

Want to retrofit an SA-4474?  
Order 702692-1 for bracket at right. See Service Instructions for details.



**Call Spider today to discuss your rental needs: (877) 774-3370**



[www.spiderstaging.com](http://www.spiderstaging.com)

**(877) 774-3370**